



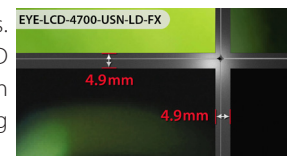
# EYE-LCD-4700-USN-LD-FX

47" VIDEO WALL LCD WITH 4.9 mm BEZEL  
AND DIRECT-LED BACKLIGHT



## PRODUCT DESCRIPTION

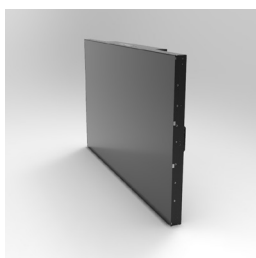
The EYE-LCD-4700-USN-LD-FX is eyevis' latest display for the assembly of ultra-super narrow bezel video wall installations. The display provides a screen diagonal of 47 inch (ca. 119 cm), Full-HD resolution with 1920x1080 pixels and Direct-LED backlight technology. The device features the eyevis-typical robust housing design and enables a mechanical bezel in a video wall that adds up to only 4.9 mm. The newly developed electronics offer an optionally activatable non-sticking mode which prevents burn-in effects or image sticking effects caused by the prolonged representation of static images.



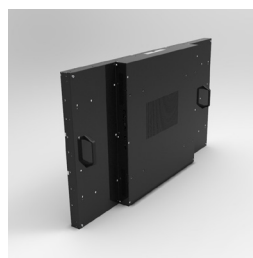
## INNOVATIVE FEATURES

- 4K Loop-Through**  
 The new internal matrix scaler of the displays enables a loop-through of signals with up to 4K resolution.
  - Simple Firmware Updates**  
 The firmware of the displays can easily be updated. All displays within a video wall can be updated at once.
  - Reliable 24/7 Operation**  
 All components designed for professional use in long-term operation.
  - Durable and Professional Design**  
 All metal structure, sleek & low-key look that makes the content stand out.
  - Landscape or Portrait Installation**
  - Non-Stick Mode (optionally activatable)**  
 To reduce potential image sticking effects three different mechanisms are built in and can be activated via OSD:
    - **Pixel Shifting** constantly moves the entire image by one pixel.
    - The intelligent **Soft Picture Mode** smoothenes extreme contrast transitions to avoid boundary line image sticking.
    - **Dynamic Pixel Refreshing** randomly changes individual pixels for a very short time so that it is not visible for the human eye at all but reduces the risk of image retention through static images considerably.
- The Non-Stick Mode can be activated for static content and deactivated for motion content.

## IMAGES



Front View

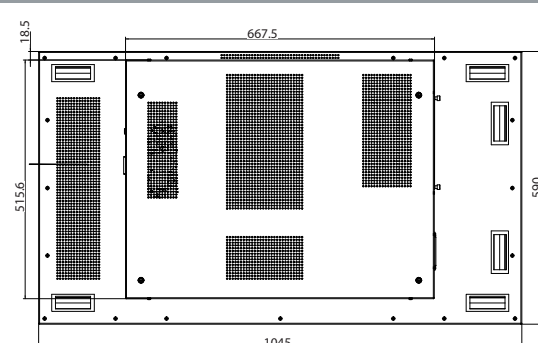
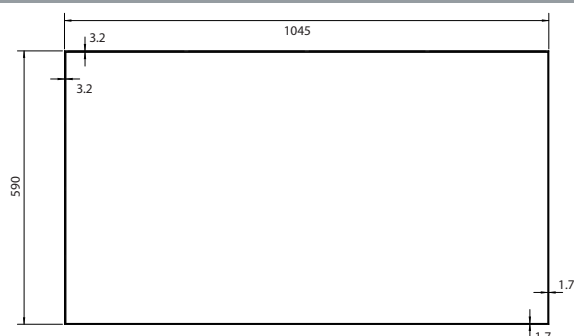


Rear View



Application

## DRAWING



Unit: mm





## EYE-LCD-4700-USN-LD-FX

47" VIDEO WALL LCD WITH 4.9 mm BEZEL AND DIRECT-LED BACKLIGHT

### TECHNICAL SPECIFICATION

#### LCD PANEL

Model Name:	EYE-LCD-4700-USN-LD-FX
Panel Type:	a-Si TFT
Screen Diagonal:	47 inch (ca. 119 cm)
Active Display Area:	1039.7 × 584.8 mm
Installation:	Landscape or Portrait Installation possible
Display Mode:	Transmissive mode, normally black
Display Resolution:	1,920 × 1,080 Pixel (full HD)
Colours:	1.07G (10-Bit Colour Processing)
Brightness:	450 cd/m <sup>2</sup> (typ.)
Contrast:	1200 : 1 (typ.)
Viewing Angle:	178° H/V
Response Time:	12 ms
Backlight:	Direct LED
Backlight Life-Time:	> 50,000 hrs (Luminance <50%)
System MTBF:	> 50,000 hrs
24/7 Operation <sup>1</sup> :	Yes

#### CONNECTORS & CONTROL

Inputs <sup>2</sup> :	Video, Y/C, DVI-I (digital/analog), HDMI, DisplayPort, RS232
Outputs <sup>2</sup> :	DisplayPort, RS232
Internal Matrix:	Yes, 10 × 10

#### MECHANICAL

Display:	1045 × 590 × 73 mm (W × H × D)
Bezel Width:	Bezel-to-Bezel: 1.7 mm bottom/right, 3.2 mm top/left (Active-to-Active: 1.85 mm bottom/right, 3.35 mm top/left)
Weight:	24 kg
VESA Mount:	400 × 600

#### OPERATING CONDITIONS

Power Consumption:	140 Watt
Input Voltage:	100V – 240V AC, 50/60 Hz
Operating Temperature:	typ. 0 – 40 °C
Humidity:	typ. 10–80 % RH (no condensation)

#### OTHER

Handling:	Handles for simple and safe transport and installation
Cooling:	Fanless design

#### OPTIONS

OPS Slot:	OPS standardized input slot for OPS-PC and additional inputs
Front-Service Option:	Full front-service Landscape/Portrait video wall mount
Colour Adjustment:	EYE-LCD-CAS colour adjustment system
Touch:	Custom infrared touch overlay for video walls

#### ORDERING INFORMATION

Item Number:	21320
--------------	-------

<sup>1</sup> When observing required terms and condition of operation

<sup>2</sup> Possible for signals up to 4K if supported by the signal source/graphic card on output side

### THE ADVANTAGES AT A GLANCE

- 47" screen diagonal (ca. 119 cm)
- Full HD resolution (1,920 × 1,080 Pixel)
- Bezel-to-Bezel: 4.9 mm
- Direct LED backlight for uniform illumination and brilliant colours
- Optimised power consumption
- Internal matrix function for signals and control
- Robust metal design for demanding applications

### APPLICATIONS

- Control Rooms (e.g. for Video Surveillance)
- Board Rooms
- Show Rooms
- Conference Rooms
- POS/POI
- Trade Fairs / Events
- Trading Rooms

### OPTIONAL ACCESSORIES

#### OPS MODULE

##### Features:

- OPS-standard compliant eyevisProcessingUnit embedded in the device. The powerful EPU-versions can be used as digital signage players or to integrate the display device in eyevis' unique MetaWall concept for IP-based signal distribution and control

#### HD<sub>BASE</sub>T MODULE

##### Features:

- Use of Cat5e/Cat6 Ethernet cable with standard RJ-45 connector for video/audio/control/power transmission.

#### 3G-SDI MODULE

##### Features:

- Internal 3G/HD/SD-SDI Board
- Supported 3G formats (SMPT 424M) 1080p@50/60Hz
- Looping out to other display
- Easy Install (Intel OPS Architecture Compliant)

#### FRONT-SERVICE WALL MOUNT



EYE-WHLCD-FS-QR-65-LAND  
for Landscape installations



EYE-WHLCD-FS-QR-65-POR  
for Portrait installations



#### eyevis GmbH

Hundschleestr. 23 • 72766 Reutlingen • Germany  
Phone: + 49 (0) 7121 43303 - 0 • Fax: + 49 (0) 7121 43303 - 22  
www.eyevis.de • info@eyevis.de

As at: 19.03.2015 / V1.1 • Subject to change!

All trademarks and registered trademarks are the property of their respective owners. Copyright © 2015 eyevis GmbH. All rights reserved.