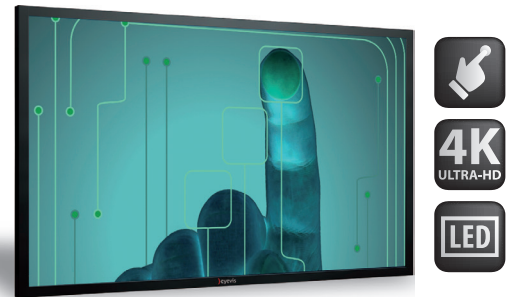




EYE-LCD-8400-QHD-LE-TOUCH-xIR

84" QUAD-FULL-HD LCD MONITOR WITH EDGE-LED BACKLIGHT AND MULTI-USER TOUCH SURFACE



) PRODUCT DESCRIPTION

eyevis' new 84" Quad-Full-HD Edge-LED Touch LCD

The new EYE-LCD-8400-QHD-LE-TOUCH-xIR display represents the latest version from eyevis professional Direct-LED display versions. It combines high resolution and unparalleled image quality with a slim design and low power consumption for a wide range of digital signage and control-room application.

With eyevis' unique optical enhanced treatment, it not only provides clear viewability, but also ensures added durability and strength in almost every ambient light condition.

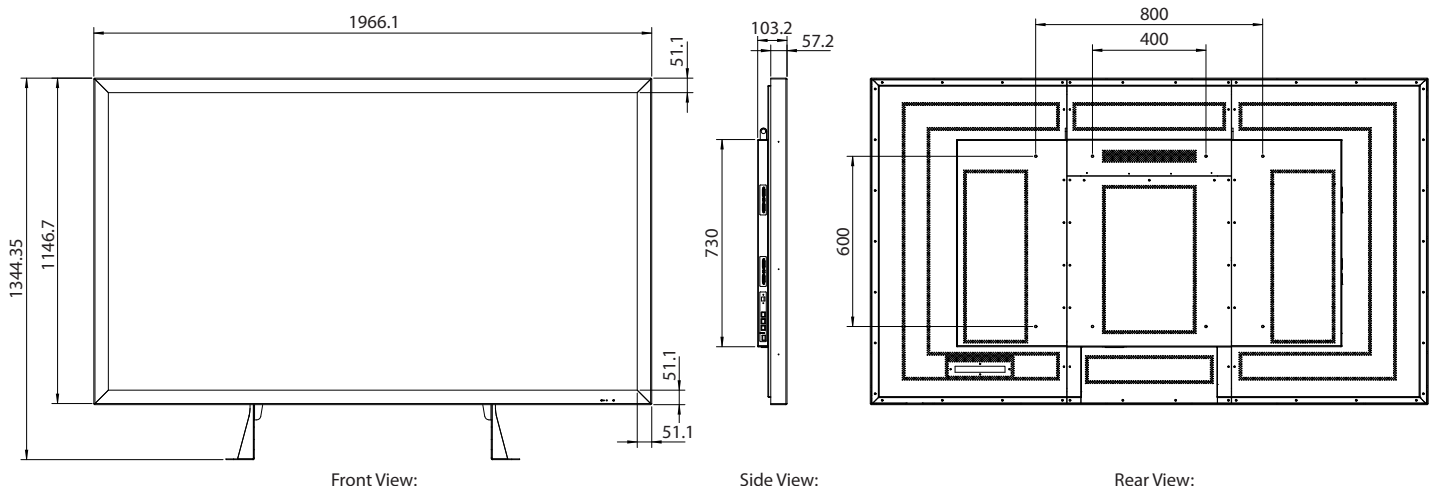
The infrared touch surface is available with different numbers of touch points. The durable touch system is the perfect choice to provide interactive display contents and interoperability to the viewer.



) ADVANTAGES OF THE EYE-LCD-8400-QHD-LE-TOUCH-xIR

- **High Resolution**
Quad-Full HD (3840 × 2160 pixel)
- **Uniform brightness thanks to Edge-LED Backlight**
- **Wide Viewing Angle**
176° horizontally and vertically
- **Best Compatibility**
Extensively tested with a broad variety of analog/digital PC and video modes.
- **Robust Metal Design**
All metal structure, Sleek & low-key look that makes the content stand out
- **Multi-User Touch**
Infrared touch surface with six or 32 simultaneous touch points.
- **Ideal for demanding applications** in presentations, conferencing, sales or information

) DIMENSIONS



Unit: mm



) TECHNICAL SPECIFICATIONS

LCD PANEL

Screen Diagonal:	84 Inch (ca. 213 cm)
Active Screen Area:	1860.48 mm (H) × 1046.52 mm (V)
Backlight Technology:	Edge-LED
Native Panel Resolution:	3.840 × 2.160 Pixel (Quad-Full-HD)
Colours:	10 Bit
Viewing Angle:	176° / 176° (H/V)
Display Response Time:	12 ms
Contrast Ratio:	1.400:1
Brightness:	typ. 500 cd/m ²
Pixel Pitch:	0.4845 mm (H) × 0.4845 mm (V)
24/7 Operation [®] :	Yes (recommended operation: 20/7)
Surface Treatment:	Hard Coating (3H), Anti-Glare Treatment of the Front Polarizer (Haze 10%)

CONNECTORS & CONTROL

Signal Inputs:	4x DVI Single Link (optional 2 × DVI Dual Link)
Control:	RS232 (9-pin D-Sub), IR remote control, rear-side control panel

TOUCH SYSTEM

Glass:	5 mm ESG safety glass (optional with anti-reflective surface)
Touch Points:	6 or 32 points (simultaneously)
Touch Technology:	Infrared
Touch Activation:	Finger, gloved hand or any other non-transparent object, object recognition and palm rejection
Activation Force:	No pressure required
Finger Touch Accuracy:	2.7 mm
Report Resolution:	32768 × 32768
Sample Rate:	Up to 200 fps
Calibration:	Four-point calibration via driver software
Date Interface:	USB 2.0 (Full speed), compatible with USB 1.1, HID compliant, plug-and-play compatible, USB B Type receptacle
Operating System:	Windows 8/7/Vista/XP, Mac OS X, Linux (Ubuntu, Fedora)
Programming Interface:	SDK: C/C++, WPF(C#), C#(DllImport), Flash/Flex/AIR AS3, Flash AS2, Java; Windows Native Touch: C/C++, C#(WPF 4.0), Flash (Flash Player v10.1 or higher), AIR 2.0; TUIO: C/C++, Flash (AS3), Java, C#/WPF
Software:	Driver

ELECTRICAL

Input Voltage:	90-264V 50/60Hz; internal power supply
Power Consumption:	max. 720 Watt

ENVIRONMENTAL

Operating Temperature:	0 – 40 °C
Storage Temperature:	max. 95%RH

MECHANICAL

Dimensions (W×H×D):	1966.1 × 1146.7 × 103.2 mm
Bezel Width:	51.1 mm
Weight:	ca. 130 kg
VESA Mount:	600 × 400mm / 600 × 800 VESA

OPTIONS

Installation:	Metal stands, carts, wall-/ceiling-mounts
Housing Colour:	Customised frame colours and logo branding

ORDER INFORMATION

6 Touch-Points / Standard Glass:	EYE-LCD-8400-QHD-LE-TOUCH-6IR -> Art.Nr. 19676
32 Touch-Points / Standard Glass:	EYE-LCD-8400-QHD-LE-TOUCH-32IR -> Art.Nr. 19675
6 Touch-Points / Anti-Glare Glass:	EYE-LCD-8400-QHD-LE-TOUCH(AG)-6IR -> Art.Nr. 19672
32 Touch-Points / Anti-Glare Glass:	EYE-LCD-8400-QHD-LE-TOUCH(AG)-32IR -> Art.Nr. 19668



eyevis GmbH

Hundsschleestr. 23 • 72766 Reutlingen • Germany
 Phone: + 49 (0) 7121 43303 - 0 • Fax: + 49 (0) 7121 43303 - 22
 www.eyevis.de • info@eyevis.de

As at: 04.08.2014/V1.2 • Subject to change!

All trademarks and registered trademarks are the property of their respective owners. Copyright © 2014 eyevis GmbH. All rights reserved.

[®]Electronic components designed for 24/7 operation. Prolonged display of static image contents may affect the display quality of the device. These effects do not affect the functionality of the device and are therefore not considered as defects in terms of our warranty conditions (recommended operating time: ≤ 20/7)