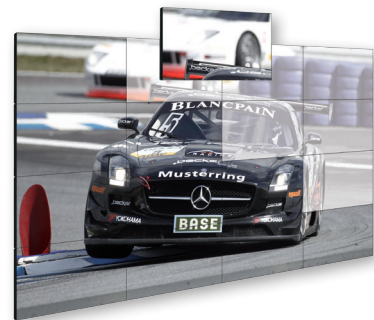




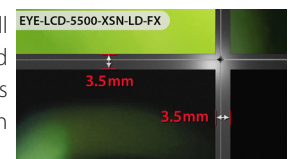
# EYE-LCD-5500-XSN-LD-FX

55" VIDEO WALL LCD WITH 3.5mm BEZEL  
AND DIRECT-LED BACKLIGHT



## ) PRODUCT DESCRIPTION

The EYE-LCD-5500-XSN-LD-FX represents eyevis' latest development in the fields of ultra-super narrow bezel video wall LCDs. With this new display type, the remaining bezel between two displays in a video wall could once again be reduced to a minimum of 3.8mm between the active screen areas (3.5mm mechanical bezel width). The new video wall displays provide a screen diagonal of 55 inch (139 cm) with full HD resolution (1920x1080 px). High definition image quality, high contrast, best brightness and the super narrow bezel are the main features of the new display type.



## ) NEW FEATURES

### ▪ 4K Loop-Through

The new internal matrix scaler of the displays enables a loop-through of signals with up to 4K resolution.

### ▪ Simple Firmware Updates

The firmware of the displays can easily be updated. All displays within a video wall can be updated at once.

### ▪ Pixel Shifting (adjustable)

Continuous shifting of the entire image in different directions prevents image sticking. At normal viewing distance, this is almost not visible. If required by the application, the shifting area can be adjusted manually.

### ▪ Dynamic Pixel Refreshing (adjustable)

A special system driving the TFT cells avoids image sticking and increases display lifetime considerably.

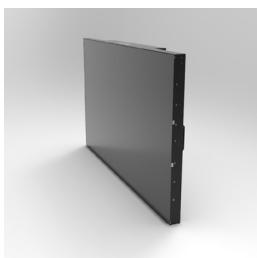
### ▪ Soft Picture Mode (adjustable)

An intelligent scaling mechanism smoothes out extreme contrast transitions. This process avoids the so called boundary line image sticking, which occurs at „sharp“ transitions (e.g. black to white). If required, the degree of „softening“ can be adjusted manually.

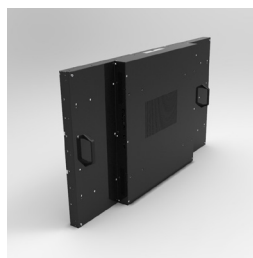
### ▪ Temperature Control System (adjustable)

Active temperature control, monitors the heat level and controls the fans.

## ) IMAGES



Front View

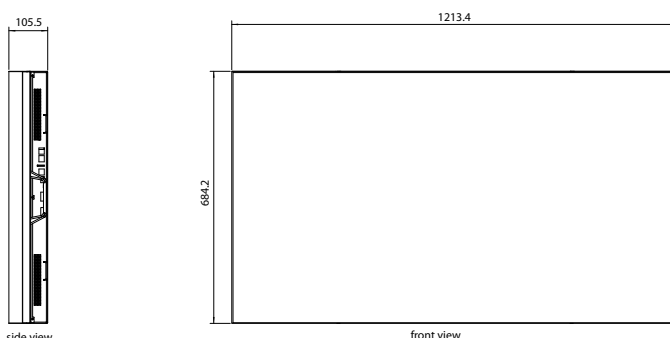


Rear View



Application

## ) DRAWING



Unit: mm



## EYE-LCD-5500-XSN-LD-FX

55" VIDEO WALL LCD WITH 3.5mm BEZEL AND DIRECT-LED BACKLIGHT

### ) TECHNICAL SPECIFICATION

#### LCD PANEL

Model Name:	EYE-LCD-5500-XSN-LD-FX
Panel Type:	a-Si TFT
Installation:	Landscape/Portrait
Active Screen Size:	54.64 inch (ca. 138,8 cm)
Display Mode:	Transmissive mode, normally black
Display Resolution:	1,920 × 1,080 Pixel (full HD)
Colours:	1.07G (10-Bit Colour Processing)
Brightness:	500 cd/m <sup>2</sup>
Contrast:	1400 : 1 (typ.)
Viewing Angle:	178° H/V
Response Time:	12 ms
Backlight:	Direct LED
Backlight Life-Time:	> 60,000 hrs (Luminance < 50%)
System MTBF:	> 60,000 hrs
24/7 Operation <sup>1</sup> :	Yes (recommended operation: 20/7)

#### CONNECTORS & CONTROL

Inputs <sup>2</sup> :	Video, Y/C, DVI-I (digital/analog), HDMI, DisplayPort, RS232
Outputs <sup>2</sup> :	DisplayPort
Internal Matrix:	10 × 10

#### MECHANICAL

Display:	1213.4 × 684.2 × 105.5 mm (W × H × D)
Bezel Width:	1.25 mm bottom/right, 2.25 mm top/left (subject to vary within mechanical tolerances of the panels)
Weight:	34 kgs
VESA Mount:	400 × 600

#### OPERATING CONDITIONS

Power Consumption:	ca. 210 Watt (max.)
Input Voltage:	100V – 240V AC, 50/60 Hz
Operating Temperature:	typ. 0 - 40 °C
Humidity:	typ. 10-80 % RH (no condensation)

#### OTHER

Handling:	Pair of handles for simple and safe transport and installation
Ventilation:	Low noise fans

#### OPTIONS

eyevis Processing Unit (-EPU):	This embedded PC solution provides additional functionalities for the displays regarding signal connectivity and control, and allows their simple integration in eyevis' fully network-based MetaWall concept.
Front-Service Option:	Full front-service Landscape/Portrait video wall mount
Colour Adjustment:	EYE-LCD-CAS colour adjustment system
Touch:	Infrared touch overlay for video walls up to 200 inch diagonal with up to 32 simultaneous touch points

#### ORDERING INFORMATION

Item Number:	21321
--------------	-------

### ) THE ADVANTAGES AT A GLANCE

- 55" screen diagonal (ca. 139 cm)
- Full HD resolution (1,920 × 1,080 Pixel)
- Gap Active-to-Active: 3.8 mm
- Direct LED backlight for uniform illumination and brilliant colours
- Optimised power consumption
- Internal matrix function for signals and control
- Robust metal design for demanding applications

### ) APPLICATIONS

- Control Rooms (e.g. for Video Surveillance)
- Board Rooms
- Show Rooms
- Conference Rooms
- POS/POI
- Trade Fairs / Events
- Trading Rooms

### ) FRONT-SERVICE OPTION



EYE-WHLCD-FS-QR-65-LAND  
(for Landscape Installation)



EYE-WHLCD-FS-QR-65-POR  
(for Portrait Installation)

<sup>1</sup> When observing required terms and condition of operation

<sup>2</sup> Possible for signals up to 4K if supported by the signal source/graphic card on output side